



Disc Series Meters M25, M35, M55, M70



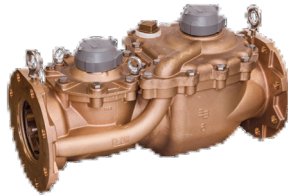
Polymer Disc Series Meters



Disc Series Meters M120, M170



Turbo Series Meters



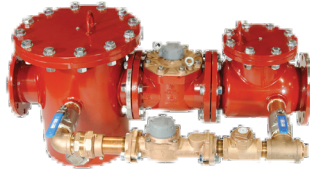
Compound Series Meters



Combo Series Meters



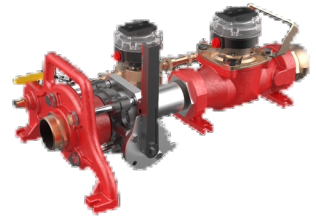
Fire Series Meter (FSMA)



Fire Series Assembly (FSAA)



Fire Hydrant Meter



Portable Large Meter Tester (PLMT)



Badger Meter

RDM-PS-05314-EN-01 (December 2025)

Can't find what you are looking for?
Give us a call at 800-875-0280 or email us
at sales@jamiesonequipment.com



Jamieson Equipment Co.

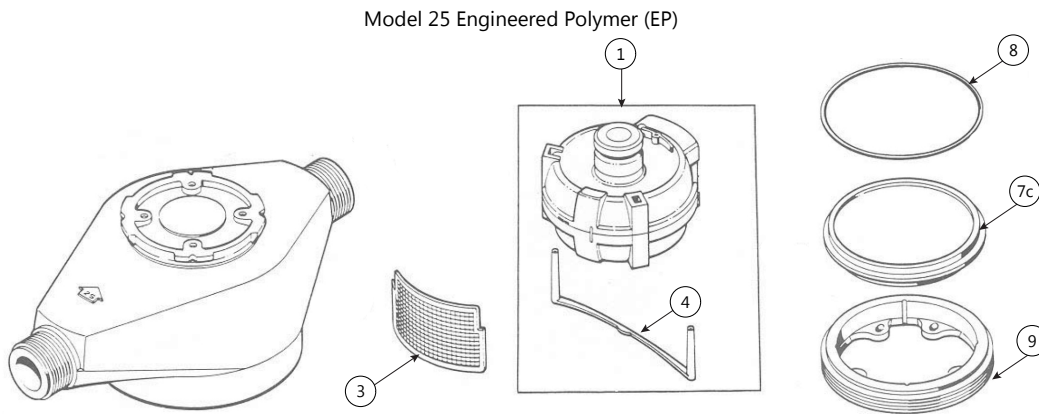
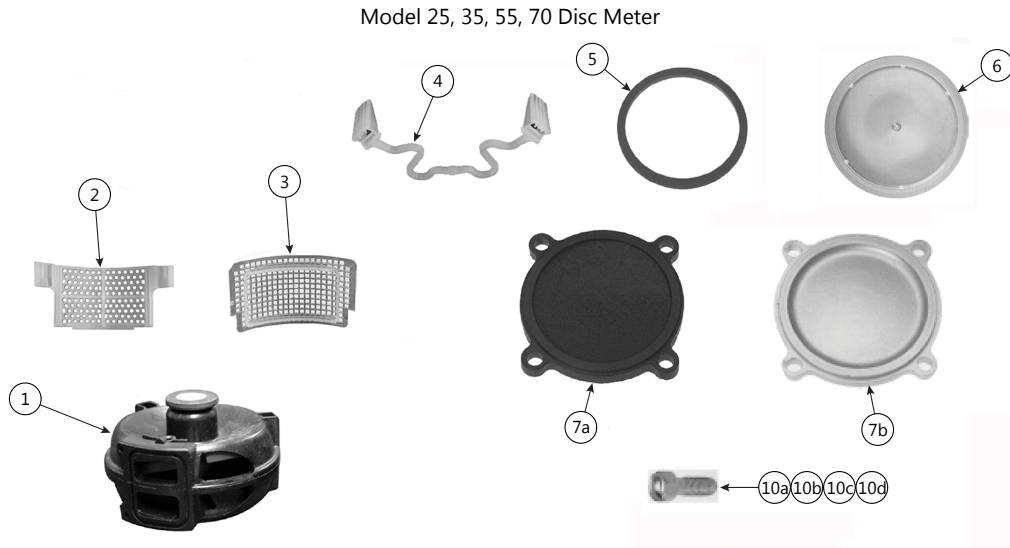
CONTENTS

Disc Series Meters, Lead Free Bronze Alloy, Models 25, 35, 55, 70 and Model 25 Engineered Polymer (EP)	4
Disc Series Meters, Lead Free Bronze Alloy, Models 120, 170	6
Turbo Series Meters, Lead Free Bronze Alloy & Cast Iron, Models 160 (1-1/2 in) 200 (2 in) 450 (3 in)1000 (4 in)	7
Turbo Series Meters, Lead Free Bronze Alloy & Cast Iron, Models 2000 (6 in) 3500 (8 in) 5500 (10 in) 6200 (12 in)	8
Compound Series Meters, Lead Free Bronze Alloy, Sizes 2, 3, 4, 6 in	9
Combo Meters, Lead Free Bronze Alloy, Size 8 in	11
Combo Meter Check Valve	12
Fire Series Meters (FSMA), Cast Iron, Sizes 3, 4, 6, 8, 10 in	13
FSMA Measuring Element Assembly, 3 and 4 in	14
FSMA Measuring Element Assembly, 6, 8, 10 in	15
Fire Series Assembly (FSAA) Meters with Turbine Bypass, Cast Iron, Sizes 4, 6, 8, 10, 12 in	16
FSAA with Turbine Bypass and Optional (2) Shutoff Valves, Cast Iron, 6, 8, 10,12 in	18
FSAA with Disc Bypass (1 in Model 70 HD Meter), Lead Free Bronze Alloy, 4, 6 in	19
Disc Bypass (1-1/2 or 2 in Model 170 HD Meter), Lead Free Bronze Alloy, 6, 8, 10 in	20
FSAA Check Valve	21
Fire Hydrant Meter, Size 3 in	22
Portable Large Meter Tester (PLMT)	24
Accessories	25



5314 Palmero Court • Buford, Ga 30518
800.875.0280 f: 678.745.3028

DISC SERIES METERS, LEAD FREE BRONZE ALLOY, MODELS 25, 35, 55, 70 AND MODEL 25 ENGINEERED POLYMER (EP)



See Parts List on next page.



5314 Palmero Court • Buford, Ga 30518
800.875.0280 f: 678.745.3028

Disc Series, Lead Free Bronze Alloy – Models 25, 35, 55, 70 and Model 25 Engineered Polymer (EP)						
Item	Description	Part Numbers				
		Model 25	Model 35	Model 55	Model 70	Model 25EP
1	Chamber assembly, plastic w/plastic thrust roller	33334-009	33334-029	65553-003	33334-032	33334-009
	Chamber assembly, plastic w/stainless steel thrust roller	—	—	—	33334-016	—
	Chamber assembly, LCP, coated magnet, Viton seals	58908-006	—	—	63079-002*	—
	Chamber assembly, LCP, coated magnet, EPR seals	58908-010	—	—	—	—
	Chamber assembly, plastic, for "RECLAIMED" water (not shown)	33334-038	33334-040	65553-004	33334-042	—
2	Combined strap and screen	64942-001	—	—	59186-001	—
3	Screen	—	59805-001	65619-001	—	34333-001
4	Chamber retainer strap	—	58540-001	58540-001	—	34547-001
ns	*Chamber retainer spring slip (high temp only) 2 required	62695-001*	—	—	62695-002*	—
5	Housing gasket	11071-033	59782-001	65592-001	58769-001	—
	Housing gasket, Viton	11071-045	—	—	58769-002*	—
6	Housing bottom liner (for cast iron)	57800-001	59786-001	65618-001	58770-001	—
7a	Housing bottom, cast iron	57799-001	59785-001	65654-001	59293-002	—
7b	Housing bottom (BiA)	62635-005	59784-005	65617-003	59703-006	—
7c	Housing bottom	—	—	—	—	34529-001
ns	Housing bottom, plastic	64428-001	—	—	—	—
8	Housing bottom O-ring seal	—	—	—	—	22650-047
9	Retainer ring	—	—	—	—	34526-001
10a	430SS Housing bolt for plastic bottom	58396-001	—	—	—	—
10b	430SS Housing bolt w/ seal hole for plastic bottom	58396-002	—	—	—	—
10c	430SS Housing bolt for bronze and CI bottom	62777-001	62777-001	62777-001	—	—
10d	430SS Housing bolt w/ seal hole for bronze and CI bottom	59058-001	59058-001	59058-001	59733-001	—
ns	O-ring for chamber	22650-045	22650-056	22650-060	22650-057	22650-045

* Industrial Disc Meters Part

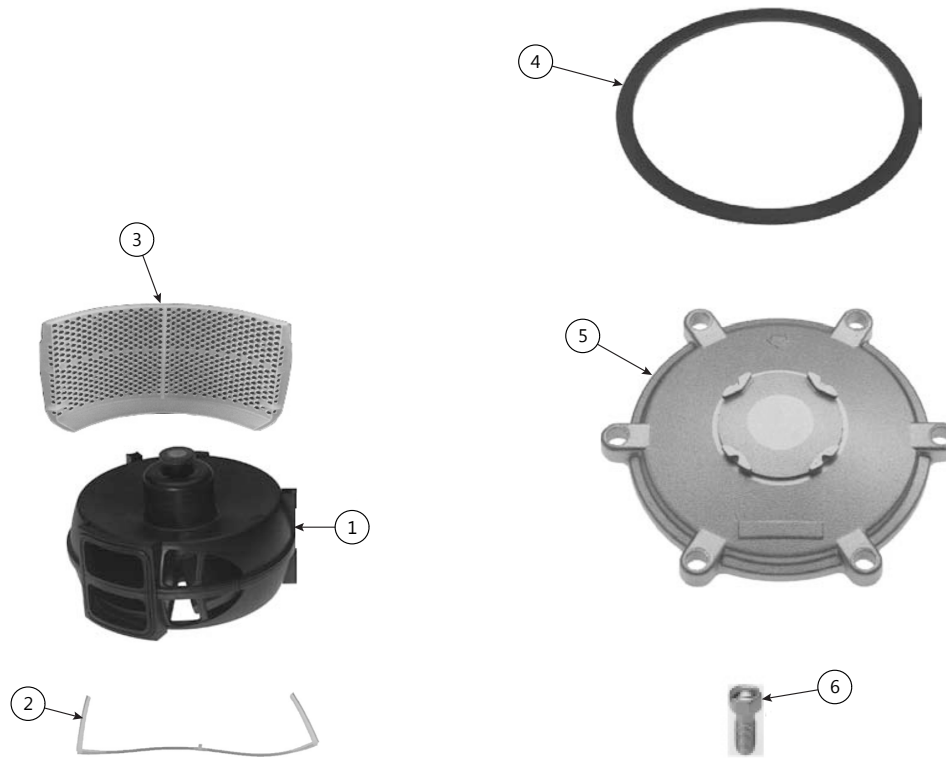
ns = not shown



5314 Palmero Court • Buford, Ga 30518
800.875.0280 f: 678.745.3028

DISC SERIES METERS, LEAD FREE BRONZE ALLOY

Models 120, 170



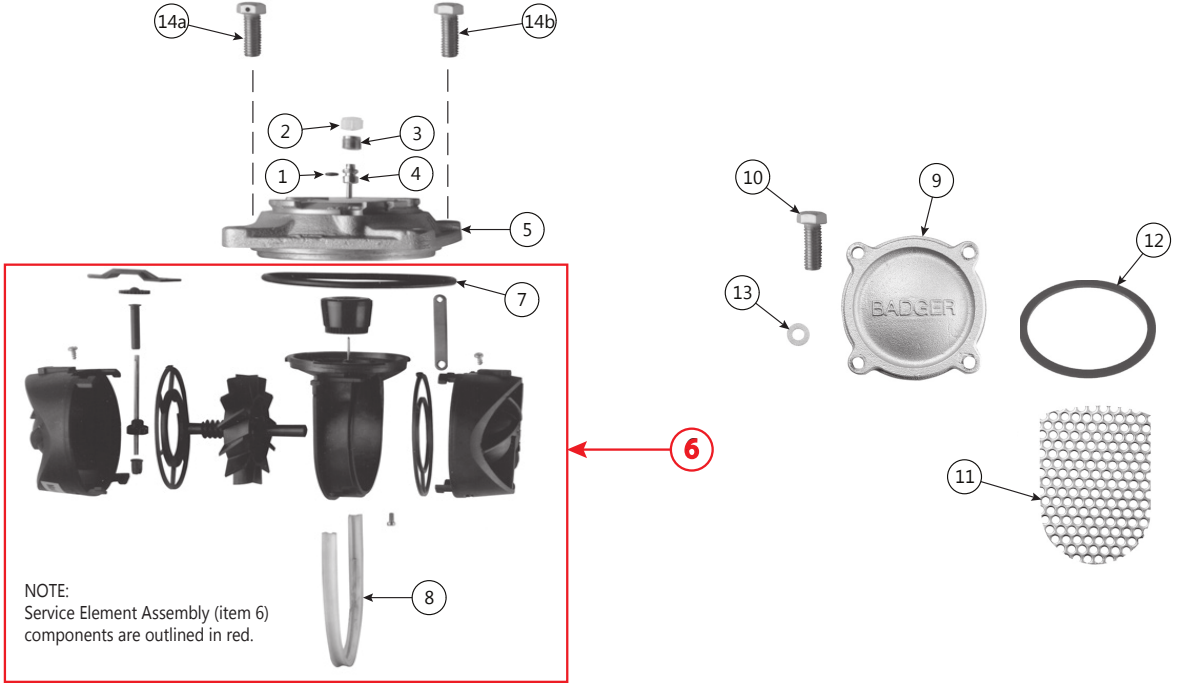
Disc Series, Lead Free Bronze Alloy – Models 120, 170			
Item	Description	Part Numbers	
		Model 120	Model 170
1	Chamber assembly with strap with stainless steel thrust roller	33334-017	33334-028
	Chamber assembly complete with strap for "RECLAIMED" water	33334-044	33334-046
	Chamber assembly, LCP, coated magnet, Viton seals	63175-002	—
2	Chamber retainer strap	56188-001	56188-001
ns	*Chamber retainer spring slip (high temp only) 2 required	62695-002*	—
3	Screen	62172-001	59720-001
4	Housing gasket	62171-001	59722-001
	Housing gasket, Viton	62171-002	—
5	Housing cover (lead free bronze alloy)	62176-001	59719-005
6	430SS Housing bolt	59732-001	59732-001
ns	1 in Test plug (lead free bronze alloy)	33879-016	33879-016
ns	O-ring for chamber	22650-058	22650-059

* Industrial Disc Meters Part

ns = not shown

TURBO SERIES METERS, LEAD FREE BRONZE ALLOY & CAST IRON

Models 160 (1-1/2 in.), 200 (2 in.), 450 (3 in.), 1000 (4 in.)



Turbo Series, Lead Free Bronze Alloy & Cast Iron – Models 160 (1-1/2 in.), 200 (2 in.), 450 (3 in.), 1000 (4 in.)

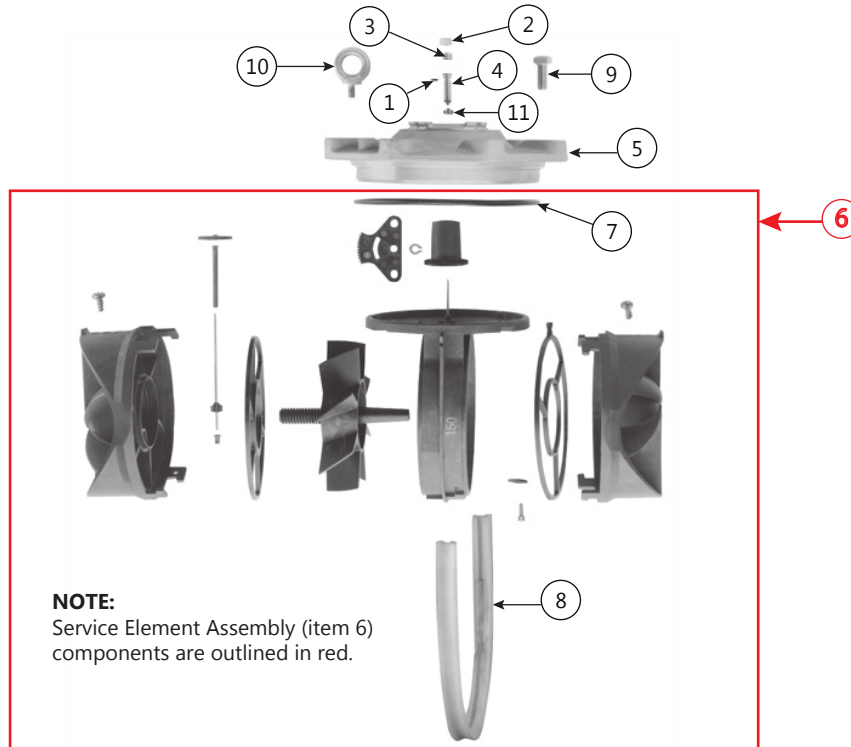
Item	Description	Part Numbers			
		1-1/2 in.	2 in.	3 in.	4 in.
1	O-ring, calibration shaft	62754-001	62754-001	62754-001	62754-001
2	Seal plug, calibration shaft	62793-001	62793-001	62793-001	62793-001
3	Lock screw, calibration shaft	68291-001	68291-001	68291-001	68291-001
4	Calibration shaft	68288-001	68288-001	68288-001	68288-001
5	Cover plate (LL)	66131-002	66131-002	66132-002	66132-002
6	Service element assembly	62755-038	62755-042	62755-039	62755-043
	Service element assembly (for models with integral strainer)	62755-042	62755-042	62755-039	62755-043
7	O-ring, head	62754-002	62754-002	62754-003	62754-003
8	Cage seal	62924-001	62924-001	62924-002	62924-002
9	Strainer cover (LL) (for models with integral strainer)	62635-005	63233-003	63281-003	63281-003
10	Cover bolt (for models with integral strainer)	55031-033	55031-060	55031-062	55031-062
11	Screen (for models with integral strainer)	63115-001	63277-001	63283-001	63285-001
12	Housing gasket (for models with integral strainers)	11071-033	22650-050	22650-051	22650-051
13	Washer for strainer cover (for models with integral strainer)	—	55262-015	55262-015	55262-015
14a	Seal bolt hex head (1 required)	25421-043	25421-043	25421-034	25421-034
14b	Bolt hex head (3 required)	55031-060	55031-060	55031-116	55031-116
ns	Test plug	33879-016	33879-014	33879-012	33879-012

ns = not shown

NOTE: Head assemblies complete can be ordered through the configurator. Contact a Customer Service Representative for availability.

TURBO SERIES METERS, LEAD FREE BRONZE ALLOY & CAST IRON

Models 2000 (6 in.), 3500 (8 in.), 5500 (10 in.), 6200 (12 in.)



Turbo Series, Lead Free Bronze Alloy & Cast Iron – Models 2000 (6 in.), 3500 (8 in.), 5500 (10 in.), 6200 (12 in.)					
Item	Description	Part Numbers			
		6 in.	8 in.	10 in.	12 in.
1	O-ring, calibration shaft	62754-001	62754-001	62754-001	62754-001
2	Seal plug, calibration shaft	62793-001	62793-001	62793-001	62793-001
3	Lock screw, calibration shaft	68291-001	68291-001	68291-001	68291-001
4	Calibration shaft	68289-001	68290-001	68290-001	68290-001
5	Cover plate (LL)	66133-002	66134-002	66134-002	66134-002
6	Service element assembly	62755-040	62755-041	62755-044	62755-044
7	O-ring, head	62754-004	62754-005	62754-005	62754-005
8	Cage seal	62924-003	62924-004	—	—
9	Seal bolt hex head (6 in , 1 required; 8...12 in , 2 required)	25421-044	58088-004	58088-004	58088-004
	Bolt hex head (6 in , 7 required; 8...12 in , 8 required)	55031-117	55031-172	55031-172	55031-172
10	Eyebolt	59215-039	59215-067	59215-067	59215-067
ns	Test plug	33879-012	33879-012	—	—

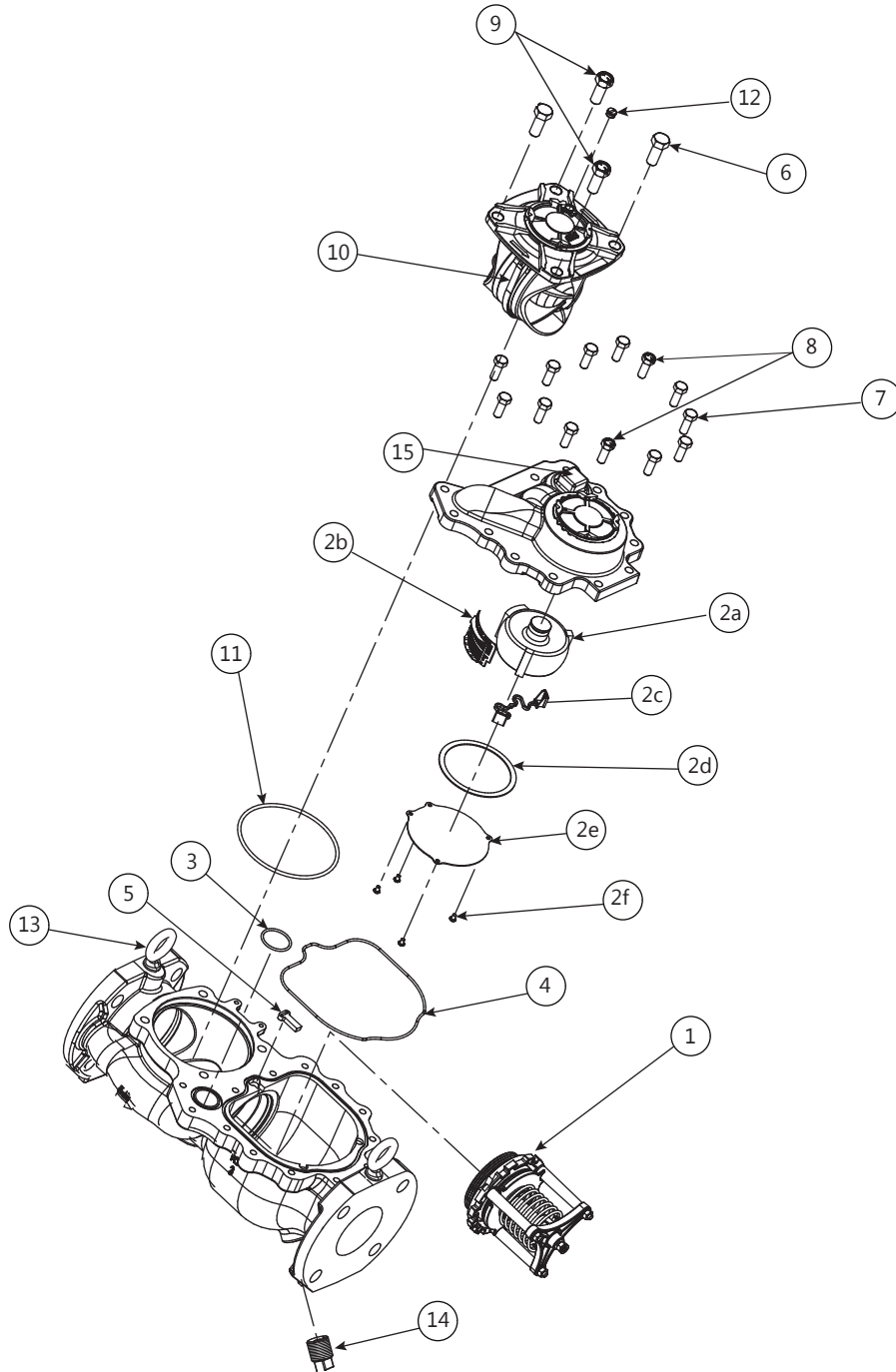
ns = not shown

NOTE: Head assemblies complete can be ordered through the configurator. Contact a Customer Service Representative for availability.

COMPOUND SERIES METERS, LEAD FREE BRONZE ALLOY

Sizes 2, 3, 4, 6 in.

Compound Series 2, 3, 4, 6 in.



See Parts List on next page.

Compound Series, Lead Free Bronze Alloy – 2, 3, 4, 6 in.					
Item	Description	Part Numbers			
		2 in.	3 in.	4 in.	6 in.
1	Valve assembly	64128-002	64066-002	64131-002	64134-002
2a	Chamber assembly	33334-023	33334-023	33334-056	33334-056
2b	Screen	64081-001	—	64142-001	64142-001
2c	Chamber retainer strap	58540-001	—	58540-001	58540-001
ns	Combined screen and strap	—	64942-001	—	—
2d	Housing gasket	11071-033	11071-033	59782-001	59782-001
2e	Cover plate	64080-001	64080-001	64141-001	64141-001
2f	Screw	55115-001	55115-001	55115-002	55115-002
3	O-ring EPDM (new style - not shown)	64083-006	64083-008	64083-008	64083-010
	O-ring old style (shipped before May 15, 2015)		64083-002		
4	O-ring EPDM	64083-007	64083-003	64083-009	64083-011
5	Lock pawl	64078-001	64078-001	64078-001	64078-001
6	Bolt hex head	55031-060	55031-116	55031-116	55031-117
7	Bolt hex head	55031-060	55031-060	55031-116	55031-117
8	Seal bolt hex head	25421-043	25421-043	25421-034	25421-044
9	Seal bolt hex head	25421-043	25421-034	25421-034	25421-044
10	Cage seal	62924-001	62924-002	62924-002	62924-003
11	O-ring	62754-002	62754-003	62754-003	62754-004
12	Calibration plug	62793-001	62793-001	62793-001	62793-001
13	Lifting ring (optional)	62736-001	62736-001	62736-001	62736-001
14	Drain plug	33879-015	33879-015	33879-015	33879-015
15	Test plug	33879-014	33879-014	33879-012	33879-012
ns	Flange adapter kit (2 in elliptical fl) (BiA)	64186-001	—	—	—
	Flange adapter kit (round fl) (BiA)	64186-002	—	64186-003	—

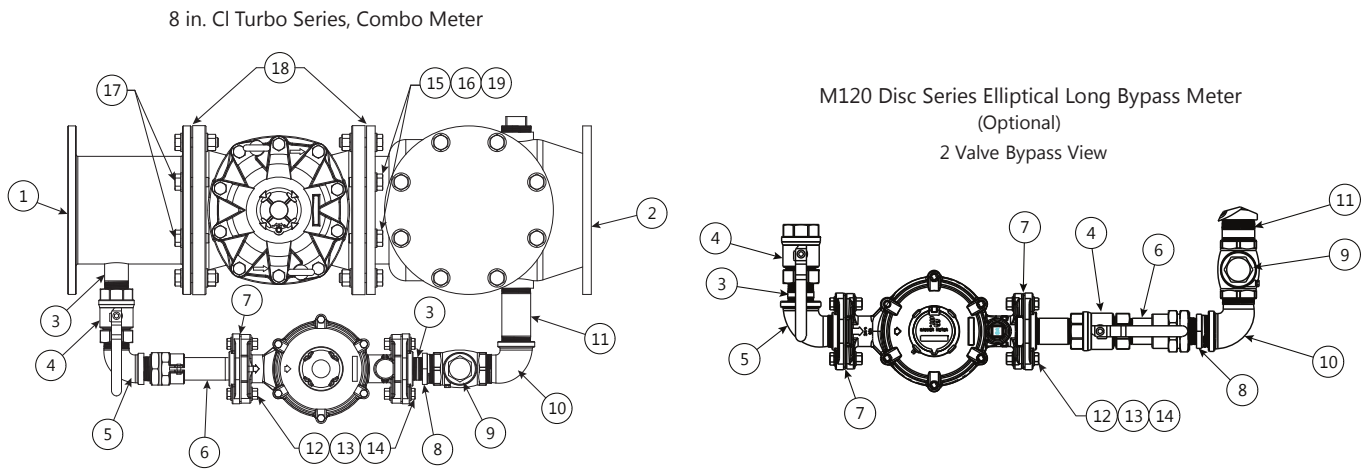
ns = not shown

NOTE: Head assemblies complete can be ordered through the configurator Contact a Customer Service Representative for availability

5314 Palmero Court • Buford, Ga 30518
800.875.0280 f: 678.745.3028

COMBO METERS, LEAD FREE BRONZE ALLOY

Size 8 in.



Combo Meters, Lead Free Bronze Alloy, 8 in. Bypass Components Head Assemblies		
Item	Description	Part Numbers
1	Spool piece (lay length 11-7/8 in)	63893-002
2	8 in check valve	63889-012
3	Close nipple 1 5 in (2 required)	14711-137
4	Ball valve with locking handle	26506-028
5	Street elbow 1 5 in	65046-006
6	Half nipple 1 5 × 6 in , 1 Thd	63886-015, 63886-006*
7	Gasket, elliptical 1 5 in (2 required)	03240-000
8	Bushing, 2 × 1 5 in	22779-034
9	2 in Swing check valve	26506-018
10	Street elbow 2 in	65046-004
11	2 × 4-1/2 in nipple	14711-140, 14711-138*
12	Bolt, 5/8-11 × 2-1/4 in (4 required)	55026-174
13	Nut, 5/8-11 (4 required)	55001-061
14	Washer, 5/8 in (8 required)	55254-019
15	Bolt, 3/4-10 × 3 (16 required)	55026-204
16	Nut, 3/4-10 (12 required)	55001-062
17	Hex head bolt 3/4-10 × 2-1/4 in (4 required)	55031-201
18	Gasket, circular, 8 in (2 required)	11071-012
19	Washer, 3/4 in (28 required)	55254-021

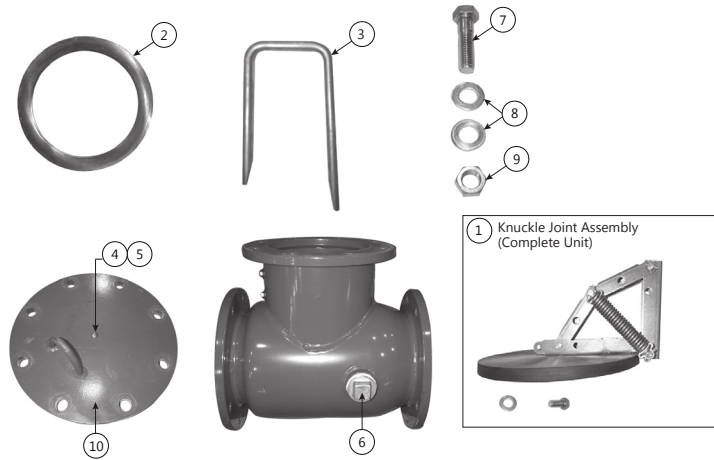
NOTE:For Disc Meter parts used in this assembly, see [Disc Series Meters, Lead Free Bronze Alloy](#) on page 6. For Turbo Meter parts used in this assembly, see [Turbo Series Meters, Lead Free Bronze Alloy & Cast Iron](#) on page 8.

* Optional Bypass part number



5314 Palmero Court • Buford, Ga 30518
800.875.0280 f: 678.745.3028

Combo Meter Check Valve



Combo Meter Check Valve		
Item	Description	Part Numbers
1	Knuckle joint assembly, complete unit	63892-003
ns	Lead free bronze alloy seat (replaceable in line)	63892-011
ns	Seat O-ring	63892-016
2	Gasket	63892-021
3	Check removal tool	63892-024
4	Vent screw	65006-001
5	Nylon washer	63892-018
6	Test plug	33879-012
7	Bolt	55026-204
8	Washer	55254-021
9	Nut	55001-062
10	Cover	63892-038

ns = not shown

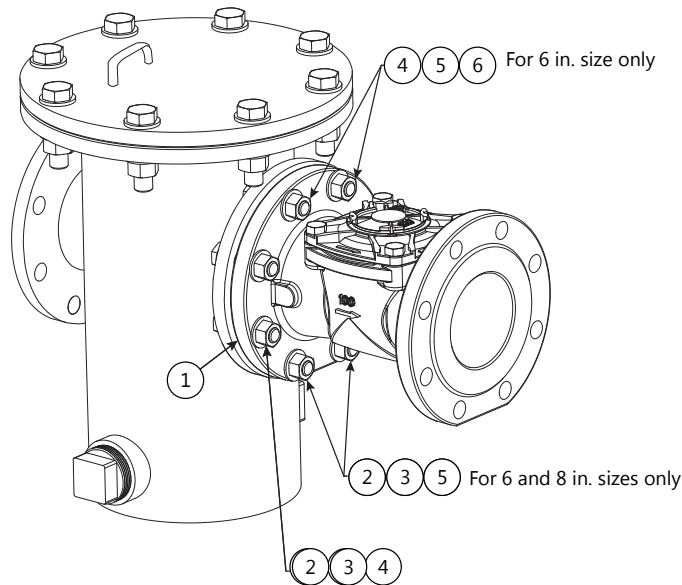


5314 Palmero Court • Buford, Ga 30518
800.875.0280 f: 678.745.3028

FIRE SERIES METERS (FSMA), CAST IRON

Sizes 3, 4, 6, 8, 10 in.

UL Certified & FM 1044 Standard Approved for Fire Service Applications NSF/ANSI Standards 61 and 372 Certified



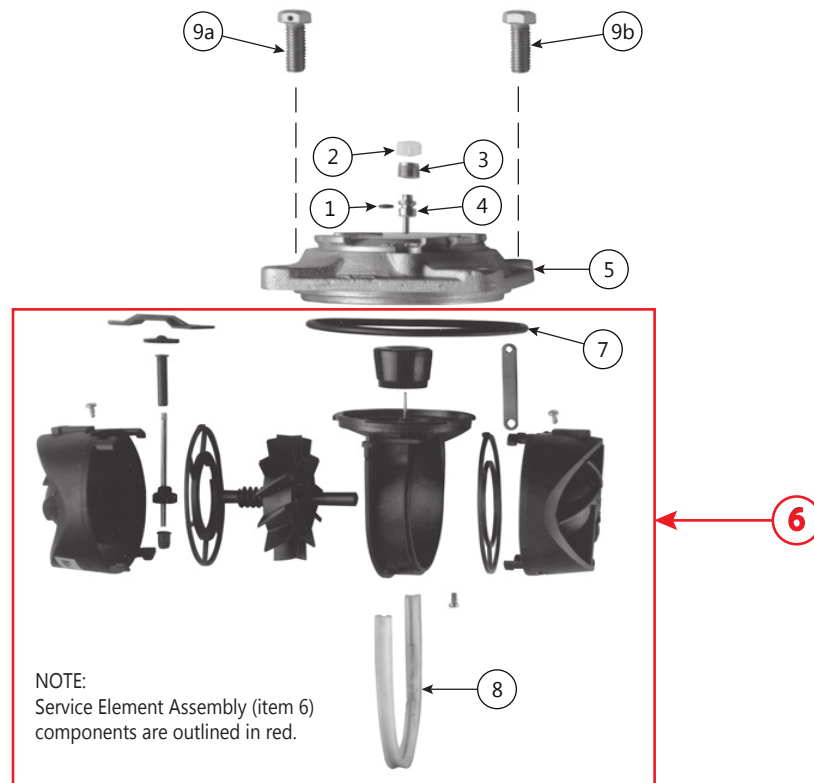
Fire Service Meters (FSMA), Cast Iron – 3, 4, 6, 8, 10 in.						
Item	Description	Part Numbers				
		3 in.	4 in.	6 in.	8 in.	10 in.
1	Gasket	11071-009	11071-010	11071-011	11071-012	11071-013
2	Bolt	55026-175	55026-175	55001-202	55026-204	55026-232
3	Nut	55001-061	55001-061	55001-062	55001-062	55001-063
4	Washer	55254-019	55254-019	55254-021	55254-021	55254-023
5	Jam nut	—	—	63891-001	63891-001	—
6	Stud	—	—	63894-001	63894-001	—
ns	Strainer cover O-ring	63892-041	63892-041	63892-033	63892-034	63892-035

ns = not shown



5314 Palmero Court • Buford, Ga 30518
800.875.0280 f: 678.745.3028

FSMA Measuring Element Assembly – 3 and 4 in.



FSMA Measuring Element Assembly – 3, 4 in.					
Item	Description	3 in.		4 in.	
1	O-ring, calibration shaft	62754-001		62754-001	
2	Seal plug, calibration shaft	62793-001		62793-001	
3	Lock screw, calibration shaft	68291-001		68291-001	
4	Calibration shaft	68288-001		68288-001	
5	Cover plate (LL)	66132-002		66132-002	
6	Service element assembly	62755-062		62755-062	
7	O-ring, head	62754-003		62754-003	
8	Cage seal	62924-002		62924-002	
9a	Seal bolt hex head (1 required)	25421-034		25421-034	
9b	Bolt hex head (3 required)	55031-116		55031-116	
ns	Test plug	33879-012		33879-012	

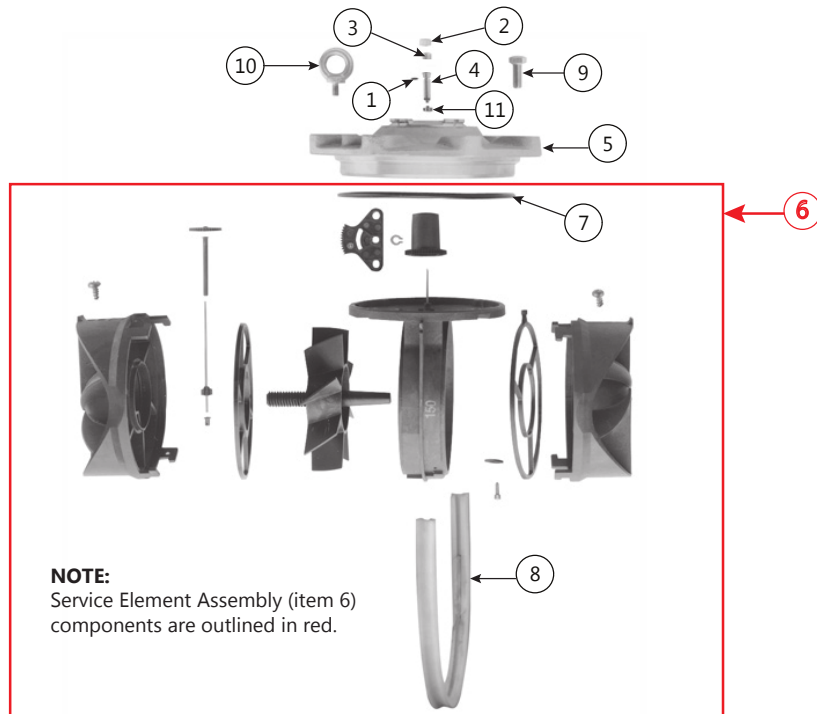
ns = not shown

NOTE: Head assemblies complete can be ordered through the configurator. Contact a Customer Service Representative for availability.



5314 Palmero Court • Buford, Ga 30518
800.875.0280 f: 678.745.3028

FSMA Measuring Element Assembly – 6, 8, 10 in.



FSMA Measuring Element Assembly – 6, 8, 10 in.				
Item	Description	Part Numbers		
		6 in.	8 in.	10 in.
1	O-ring, calibration shaft	62754-001	62754-001	62754-001
2	Seal plug, calibration shaft	62793-001	62793-001	62793-001
3	Lock screw, calibration shaft	68291-001	68291-001	68291-001
4	Calibration shaft	68289-001	68290-001	68290-001
5	Cover plate (LL)	66133-002	66134-002	66134-002
6	Service element assembly	62755-063	62755-064	62755-065
7	Head O-ring	62754-004	62754-005	62754-005
8	Cage seal	62924-003	62924-004	—
9	Seal bolt hex hd (6 in , 1 required; 8 and 10 in , 2 required)	25421-044	58088-004	58088-004
	Bolt hex hd (6 in , 7 required; 8 and 10 in , 8 required)	55031-117	55031-172	55031-172
10	Eyebolt	59215-039	59215-067	59215-067

NOTE: Head assemblies complete can be ordered through the configurator. Contact a Customer Service Representative for availability.

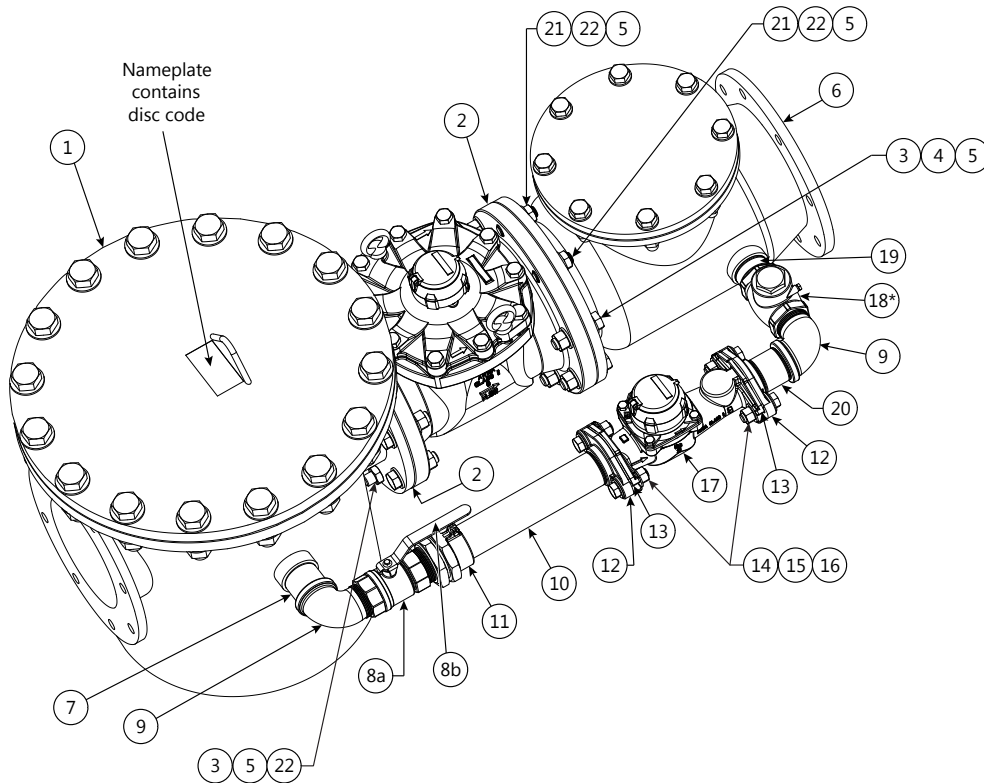


5314 Palmero Court • Buford, Ga 30518
800.875.0280 f: 678.745.3028

FIRE SERIES ASSEMBLY (FSAA) METERS WITH TURBINE BYPASS, CAST IRON

Sizes 4, 6, 8, 10, 12 in.

UL Certified & FM 1044 Standard Approved for Fire Service Applications NSF/ANSI Standards 61 and 372 Certified



See Parts List on next page.



5314 Palmero Court • Buford, Ga 30518
800.875.0280 f: 678.745.3028

Fire Series Assembly (FSAA) with Turbine Bypass, Cast Iron – 4, 6, 8, 10, 12 in.						
Item	Description	Part Numbers				
		4 in.	6 in.	8 in.	10 in.	12 in.
1	Strainer	—	—	—	—	—
2	Gasket	11071-010	11071-011	11071-012	11071-013	11071-013
3	Bolt	55026-175	55026-203	55026-204	55026-232	55026-232
4	Nut	55001-061	55001-062	55001-062	55001-063	55001-063
5	Washer	55254-019	55254-021	55254-021	55254-023	55254-023
6	Check valve	63889-001	63889-011	63889-012	63889-013	63889-014
7	Nipple	14711-138	*14711-152	*14711-155	14711-155	14711-155
8a	Ball valve with non-locking handle	26506-026	26506-026	26506-026	26506-026	26506-026
8b	Optional locking handle	26506-016	26506-016	26506-016	26506-016	26506-016
9	Street elbow	65046-004	65046-004	65046-004	65046-004	65046-004
10	Half nipple	63886-010	63886-007	63886-009	63886-009	63886-009
11	Repair coupling	63887-008	63887-008	63887-008	63887-008	63887-008
12	Flange	67632-014	67632-014	67632-014	67632-014	67632-014
13	O-ring	31132-055	31132-055	31132-055	31132-055	31132-055
14	Bolt	55026-174	55026-174	55026-174	55026-174	55026-174
15	Nut	55001-061	55001-061	55001-061	55001-061	55001-061
16	Washer	55254-019	55254-019	55254-019	55254-019	55254-019
17	2 in Turbo series meter	—	—	—	—	—
18*	Check valve	26506-031	26506-018	26506-018	26506-018	26506-018
19	Nipple	*14711-157	14711-138	14711-138	14711-155	14711-155
20	Nipple	14711-138	14711-138	14711-140	14711-156	14711-156
21	Stud	—	63894-001	63894-001	—	—
22	Jam nut	—	63891-001	63891-001	—	—

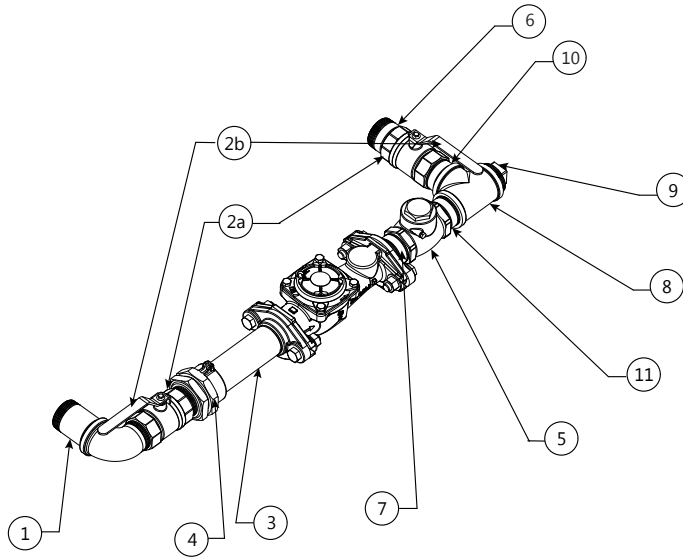
* If replacing item 18 and the check valve date code prior to 11/2005, any part numbers with (*) must also be replaced

NOTE: Strainers can be ordered through the configurator. Contact a Customer Service Representative for availability.



5314 Palmero Court • Buford, Ga 30518
800.875.0280 f: 678.745.3028

FSAA with Turbine Bypass and Optional (2) Shutoff Valves, Cast Iron – 6, 8, 10,12 in.



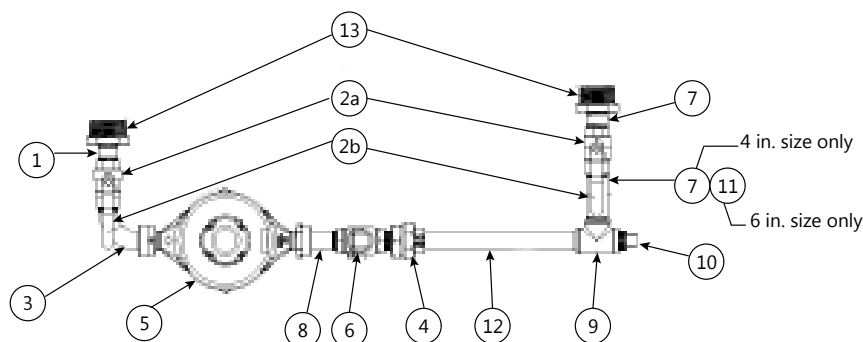
FSAA with Turbine Bypass and Optional (2) Shutoff Valves, Cast Iron – 6, 8, 10, 12 in.				
Item	Description	Part Numbers		
		6 in.	8 in.	10 in., 12 in.
1	Nipple	14711-157	14711-155	14711-152
2a	Ball valve with non-locking handle	26506-026	26506-026	26506-026
2b	Optional locking handle	26506-016	26506-016	26506-016
3	Half nipple	*63886-012	*63886-012	63886-009
4	Repair coupling	63887-008	63887-008	63887-008
5*	Check valve	26506-018	26506-018	26506-018
6	Nipple	14711-152	14711-138	14711-155
7	Nipple	14711-138	14711-138	14711-142
8	Brass tee	64159-004	64159-004	64159-004
9	Test plug	33879-012	33879-012	33879-012
10	Nipple	14711-138	14711-138	14711-138
11	Nipple	14711-138	14711-138	14711-142

* If replacing item 5 and the check valve date codes prior to 11/2005, any part numbers with (*) must also be replaced



5314 Palmero Court • Buford, Ga 30518
800.875.0280 f: 678.745.3028

FSAA with Disc Bypass (Model 70 HD Meter, 1 in.), Lead Free Bronze Alloy – 4, 6 in.



FSAA with Disc Bypass (Model 70 HD meter, 1 in.), Lead Free Bronze Alloy – 4, 6 in.			
Item	Description	Part Numbers	
		4 in.	6 in.
1	Nipple	14711-160	14711-157
2a	Ball valve with non-locking handle	26506-024	26506-026
2b	Optional locking handle	26506-015	26506-016
3	Connection assembly	07562-007	07562-007
4	Repair coupling	63887-009	63887-008
5	1 in Model 70 head meter	See table below	See table below
6*	Check valve	26506-022	26506-018
7	Nipple	14711-160	14711-152
8	Connection assembly	07561-019	07561-019
9	Brass tee	64159-005	64159-004
10	Test plug	33879-016	33879-012
11	Nipple	—	14711-138
12	Half nipple	*63886-014	*63886-010
13	Reducer	63003-007	63003-007

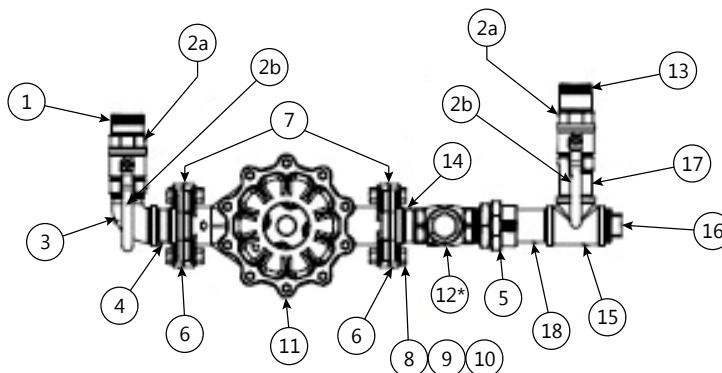
* If replacing item 6 and the check valve date codes prior to 11/2005, any part numbers with (*) must also be replaced

Model 70 HD meter – 1 in.	
Description	Part Numbers
Screen	59186-001
Chamber assembly	33334-005
Housing gasket	58769-001
Bolt hex hd	55031-065
Seal bolt hex hd	25421-045



5314 Palmero Court • Buford, Ga 30518
800.875.0280 f: 678.745.3028

Disc Bypass (Model 170 HD Meter, 1-1/2 or 2 in.), Lead Free Bronze Alloy – 6, 8, 10 in.



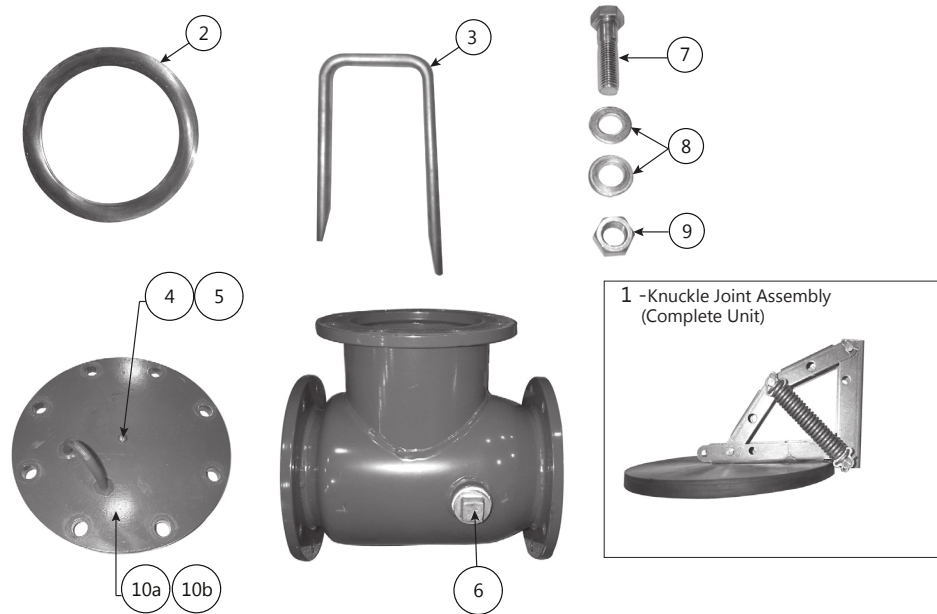
NOTE: The illustration above is an 8 inch bypass configuration. Position of some components may vary per meter size, but part description and numbers are consistent.

Disc Bypass (Model 170 HD Meter, 1-1/2 or 2 in.), Lead Free Bronze Alloy – 6, 8, 10 in.				
Item	Description	Part Numbers		
		6 in.	8 in.	10 in., 12 in.
1	Nipple	*14711-133	14711-138	14711-154
2a	Ball valve with non-locking handle	26506-026	26506-026	26506-026
2b	Optional locking handle	26506-016	26506-016	26506-016
3	Street elbow	65046-004	65046-004	65046-001
4	Nipple	14711-154	*14711-150	14711-141
5	Repair coupling	63887-008	63887-008	63887-008
6	Flange	67632-014	67632-014	67632-014
7	O-ring	31132-055	31132-055	31132-055
8	Bolt	55026-174	55026-174	55026-174
9	Nut	55001-061	55001-061	55001-061
10	Washer	55254-019	55254-019	55254-019
11	Connection assembly	See table below	See table below	See table below
12*	Check valve	26506-018	26506-018	26506-018
13	Nipple	14711-138	14711-152	14711-155
14	Nipple	14711-138	14711-138	*14711-150
15	Brass tee	64159-004	64159-004	64159-004
16	Test plug	33879-012	33879-012	33879-012
17	Nipple	14711-138	14711-138	14711-138
18	Half nipple	63886-001	63886-001	63886-006

* If replacing item 12 and the check valve date code is prior to 11/2005, any part numbers with (*) must also be replaced

Model 170 HD Meter, 1-1/2, 2 in.		
Description	Part Numbers	
	1-1/2 in.	2 in.
Screen	59720-001	59720-001
Chamber assembly	33334-028	33334-028
Chamber retainer strap	56188-001	56188-001
Housing gasket	59722-001	59722-001
Seal bolt hex hd	25421-046	25421-046
Bolt hex hd	55031-119	55031-119

FSAA Check Valve



FSAA Check Valve					
Item	Description	Part Numbers			
		4 in.	6 in.	8 in.	10 in., 12 in.
1	Knuckle joint assembly, complete unit	63892-001	63892-002	63892-003	63892-003
2	Gasket (effective 5/2014 or later)	63892-062	—	—	—
	Gasket (effective 4/2014 or later)	—	63892-063	63892-064	63892-064
	Old style gasket	63892-019	63892-020	63892-021	63892-021
3	Check removal tool	63892-022	63892-023	63892-024	63892-024
4	Vent screw	65006-001	65006-001	65006-001	65006-001
5	Nylon washer	63892-018	63892-018	63892-018	63892-018
6	Test plug	33879-012	33879-012	33879-012	33879-012
7	Bolt	55026-175	55026-204	55026-204	55026-204
8	Washer	55254-019	55254-021	55254-021	55254-021
9	Nut	55001-061	55001-062	55001-062	55001-062
10a	Cover	63892-036	63892-037	63892-038	63892-040
10b	Optional cover with test plug	65913-004	65913-005	65913-006	65913-006
ns	Lead free bronze alloy seat (replaceable in line)	63892-009	63892-010	63892-011	63892-011
ns	Seat O-ring	63892-014	63892-015	63892-016	63892-016

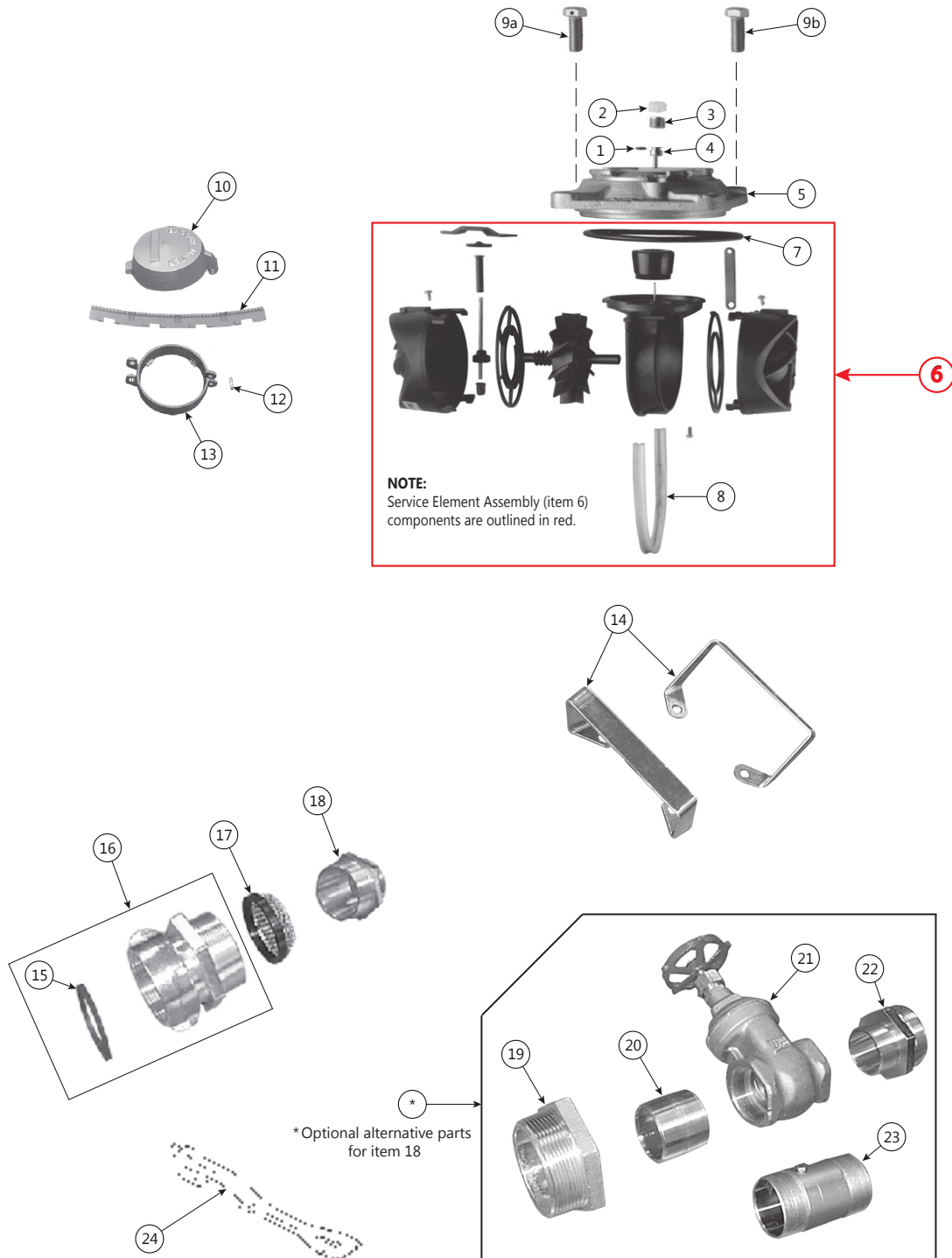
ns = not shown



5314 Palmero Court • Buford, Ga 30518
 800.875.0280 f: 678.745.3028

FIRE HYDRANT METERS

Size 3 in.



See Parts List on next page.

Fire Hydrant Meter, 3 in.		
Item	Description	Part Number
1	O-ring, calibration shaft	62754-001
2	Seal plug, calibration shaft	62793-001
3	Lock screw, calibration shaft	62976-004
4	Calibration shaft	62976-003
5	Cover plate	66132-002
6	Service element assembly	62755-039
7	O-ring, head	62754-003
8	Cage seal	62924-002
9a	Seal bolt hex head (1 required)	25421-034
9b	Bolt hex head (3 required)	55031-116
10	Cover, register, bronze	58647-001
11	Retainer, flat	59542-001
12	Pin, cover	59568-001
13	Base ring w/lock hasp	59525-004
14	Handle (2 required)	63129-001
15	Gasket, swivel coupling	59677-001
16	Connection assembly, swivel, NH (other thread forms available upon request)	63180-001
17	Screen	63131-001
18	Nipple reducer, 3 in NPT x 2-1/2...7-1/2 in NH (other thread forms available upon request), bronze	25724-000
	Nipple reducer, 3 in NPT x 2-1/2...7-1/2 in NH (other thread forms available upon request), lead free bronze alloy	25724-014
19*	Pipe bushing hex 3 x 2 in NPT (for use with 2 in gate valve), stainless steel	22779-027
	Pipe bushing hex 3 x 2-1/2 in NPT (for use with 2-1/2 in gate valve), stainless steel	22779-029
20*	Nipple, 2 in NPT x 2 long (for use with 2 in gate valve), brass	14711-138
	Nipple, (for use with 2-1/2 in gate valve), brass	14711-161
21*	Valve, gate 2 in , bronze	26506-040
	Valve, gate 2-1/2 in , lead free bronze alloy	26506-017
22*	Fire hose reducer, 2 in NPT x 2-1/2...7-1/2 in NH (for use with 2 in gate valve), bronze	26505-000
	Fire hose reducer, 2 in NPT x 2-1/2...7-1/2 in NH (for use with 2 in gate valve), lead free bronze alloy	26505-006
	Fire hose reducer, 2-1/2 in NPT x 2-1/2...7-1/2 in NH (for use with 2-1/2 in gate valve), bronze	63000-001
	Fire hose reducer, 2-1/2 in NPT x 2-1/2...7-1/2 in NH (for use with 2-1/2 in gate valve), lead free bronze alloy	63000-002
23*	2 in silent seat check valve with S S springs	62037-002
24	Spanner wrench	62115-001
ns	Test plug	33879-012

ns = not shown

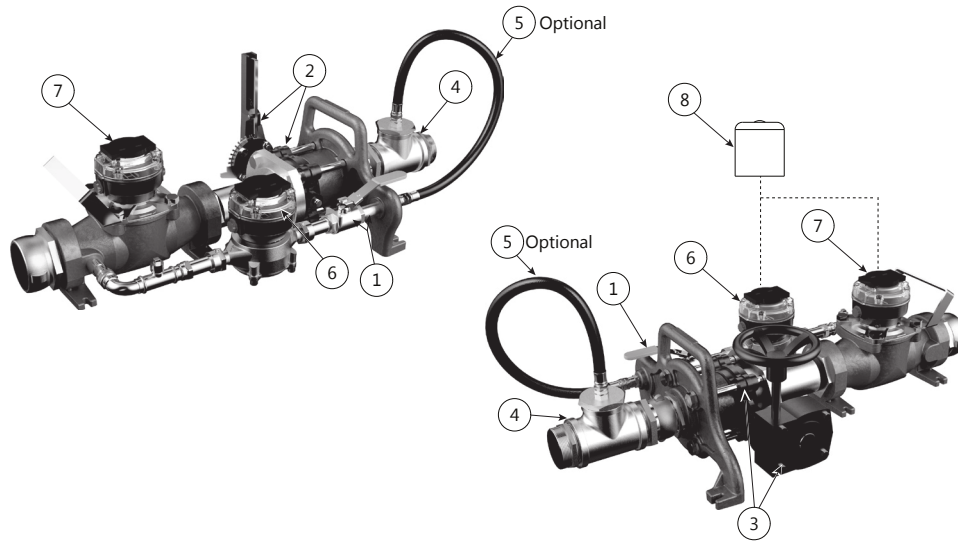
* Alternative parts for item 18

NOTE: Head assemblies complete can be ordered through the configurator Contact a Customer Service Representative for availability



5314 Palmero Court • Buford, Ga 30518
800.875.0280 f: 678.745.3028

PORTABLE LARGE METER TESTER (PLMT)



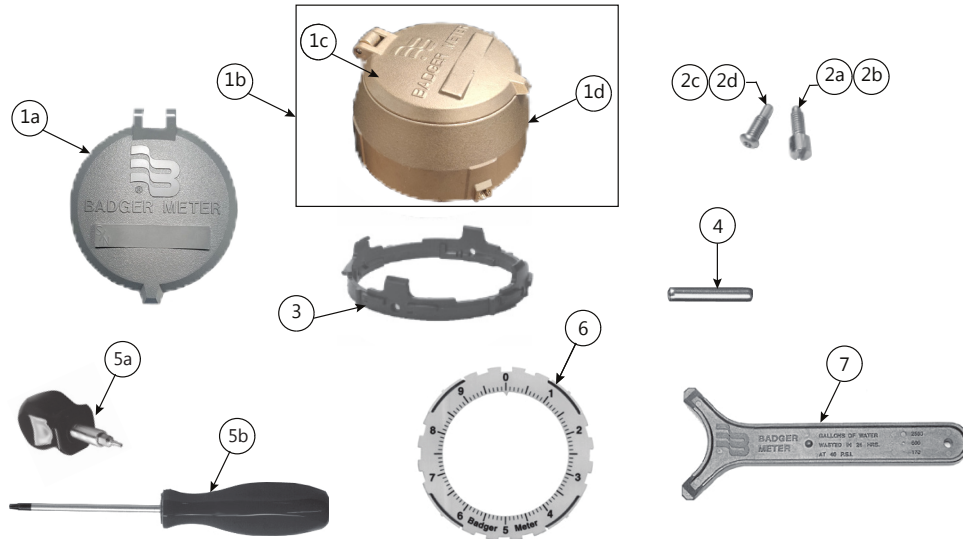
Portable Large Meter Tester (PLMT)			
Item	Description	Part Numbers	
1	Ball valve kit (includes valve and nipple)	26506-046	
2	Butterfly valve with handle and 10-position detent (internal valve not shown)	26506-042	
3	Butterfly valve with gearbox operator	26506-043	
4	Tee flow combiner, includes hose Item 7	68250-001	
5	3/4 in rubber hose (FHGT double female thread), optional	68223-003	
6	ER-9 with cover	65848-006	
7	ER-9 gasket kit (kit includes gasket, gasket with clear lens, alcohol wipe)	68282-001	
8	ER-9 travel cover	64236-001	
ns	Spanner wrench	62115-001	
ns	12 5 ft fire hose with coupling	62994-001	
ns	Hose reducer	2-1/2 MNST × 1-1/2 MNPT	63006-001
		2-1/2 MNST × 2 MNPT	63004-001
		2-1/2 MNST × 1 MNPT	63018-001
ns	Hose cap, 3/4 in FGHT with gasket	68223-002	

ns = not shown



5314 Palmero Court • Buford, Ga 30518
800.875.0280 f: 678.745.3028

ACCESSORIES



Accessories		
Item	Description	Part Numbers
1a	Register flat lid (plastic) medium gray	62278-003
ns	Register flat lid (purple) "RECLAIMED"	62740-001
1b	Register flat lid and shroud (bronze)	62616-001
1c	Register flat lid (bronze)	62353-001
1d	Register shroud (bronze)	62442-001
2a	Tamper-resistant slotted seal screw, standard (for local register, HR-E)	62335-001
2b	Tamper-resistant slotted seal screw, standard (for HR-E LCD encoder)	62624-001
2c	Tamper-resistant TORX® seal screw (for local register,HR-E)	62516-001
2d	Tamper-resistant TORX® seal screw (for HR-E LCD encoder)	62516-002
ns	Tamper-resistant keyed seal screw, standard (for local register, HR-E)	66925-001
ns	Tamper-resistant keyed seal screw, short (for HR-E LCD encoder)	66925-003
3	Plastic insert for flat lid bronze shroud	62455-001
4	Flat lid hinge pin	59568-003
5a	TORX® seal screw driver & bit (stubby)	62658-001
5b	TORX® seal screw driver & bit (long)	62658-003
ns	TORX® seal screw driver bit (not shown)	62657-001
ns	Driver bit, keyed seal screw (not shown)	66925-002
ns	Bit driver, stubby, without bit (not shown)	62658-005
ns	Bit driver, standard, without bit (not shown)	62658-006
6	Local register test ring	62446-001
7	Plastic shroud disassembly tool	62346-001

ns = not shown



5314 Palmero Court • Buford, Ga 30518
 800.875.0280 f: 678.745.3028